



Department of Planning and Environment

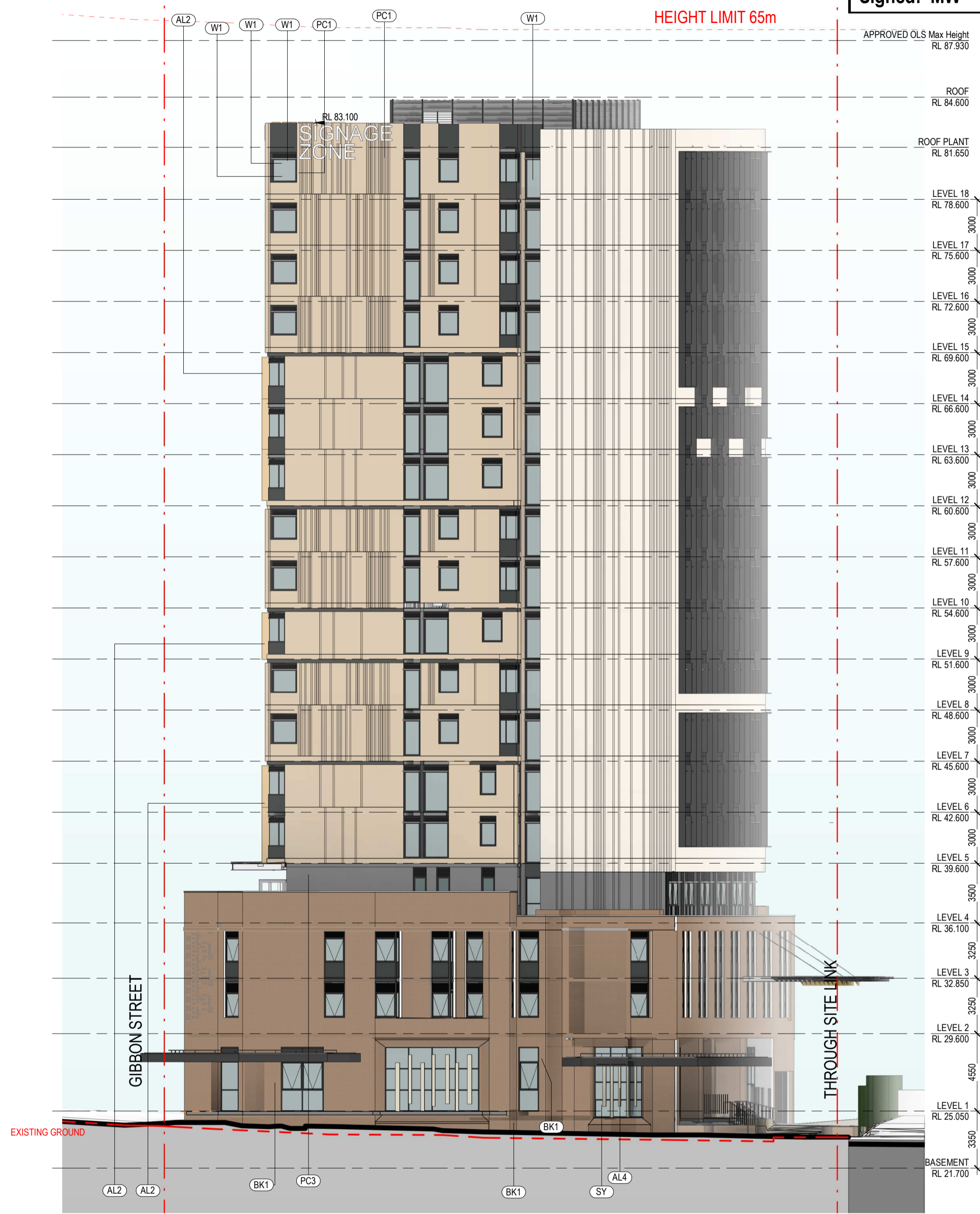
Issued under the Environmental Planning and Assessment Act 1979 Approved Section 4.55 (1A) Modification Application

No: SSD 9194 MOD 6 Granted on 19 April 2023

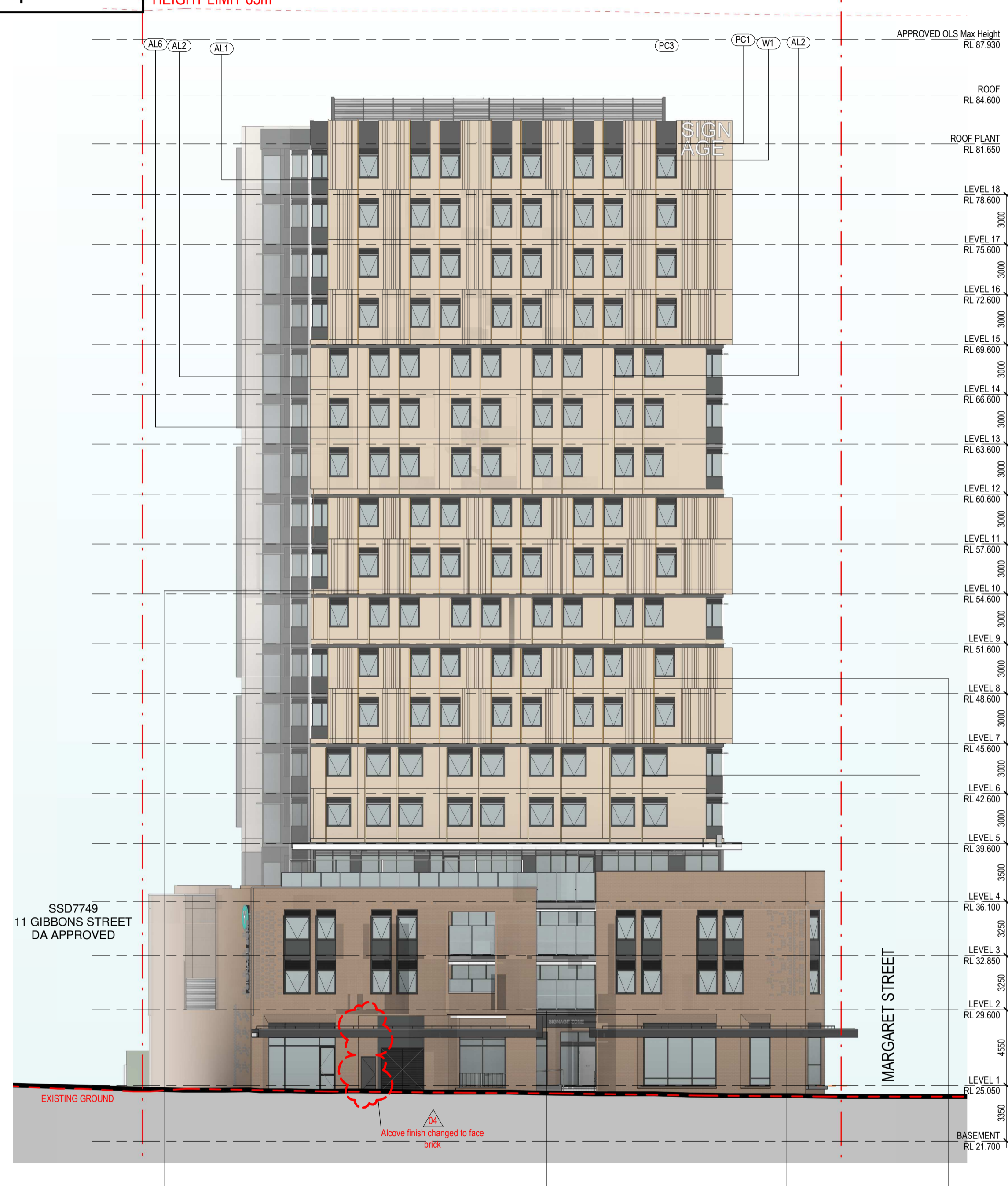
Signed: MW Sheet No: 1 of 1

MATERIALS & FINISHES LEGEND

- AL1 - VERTICAL ALUMINIUM FIN 1
AL2 - VERTICAL ALUMINIUM FIN 2
AL3 - VERTICAL ALUMINIUM FIN 3
AL4 - VERTICAL ALUMINIUM FIN 4
AL5 - VERTICAL PERFORATED MESH SHADE
AL6 - ALUMINIUM PANEL
AWF - FOOTPATH AWNING (MIN 3.2m ABOVE GROUND)
AWT - TERRACE AWNING
BAL 1 - STEEL BALUSTRADE
BAL 2 - GLAZED BALUSTRADE
BHP - BRICK HEADER PATTERN
BK1 - BRICK CAVITY WALL 1
BK2 - BRICK CAVITY WALL 2
CBG - COLOUR BACK GLASS
LP - LOUVERED PANEL
LW - LOUVERED WALL WITH BUILT IN DOOR ACCESS
PC1 - PRECAST CONCRETE PANEL TINT 1
PC2 - PRECAST CONCRETE PANEL TINT 2
PC3 - PRECAST CONCRETE PANEL TINT 3
PC4 - PRECAST CONCRETE PANEL TINT 4
SH1 - HORIZONTAL SOLAR SHADING 1
SH2 - HORIZONTAL SOLAR SHADING 2
SH3 - HORIZONTAL SOLAR SHADING 3
SH4 - HORIZONTAL PERFORATED MESH SHADE
SOL - SOL PANELS
SY - SHOPFRONT GLAZING SYSTEM TO STREET AND TERRACE LEVEL
W1 - OPERABLE WINDOW FOR SOLE OCCUPANCY UNIT



1 SOUTH ELEVATION. 1:200



2 GIBBONS ST ELEVATION. 1:200

Table with 4 columns: Revisions No., Date, Description, Ver. App'd. It lists four revisions from 01 to 04, all dated 09.06.2021, 16.09.2021, 19.08.2022, and 18.11.2022, all with description 'Section 4.55 Application' and 'RP' for both Ver. and App'd.

Key

Client: The Trust Company Australia (Limited) ATF WH Gibbons Trust

Architect



79 Myrtle Street Chippendale NSW 2008 AUSTRALIA ph +61 2 9311 8222 fx +61 2 9311 8200 ABN 53 003 782 250

Project

WEE HUR STUDENT HOUSING 13-23 Gibbons Street, Redfern

Proj. No. 18029

Drawing Title

ELEVATION SOUTH & WEST

Sheet Status

NOT FOR CONSTRUCTION

Scale

1:200 @A1

Drawing No.

DA3002 04

Issue